

**Pupil Activity
Booklet**



Welcome to the
Big Battery Hunt!

Your challenge!

Under adult supervision, collect as many used batteries as you can find and take them to a local recycling point. Be a Battery Pioneer and power change by encouraging your family, friends and the wider community to do the same!

Complete the activities in this booklet.

Adults please see the safety guidance on page 9

Stay safe!

Always ask an adult before touching or removing batteries and make sure they have read the safety information on page 9

Why recycle batteries?

We all know that paper, plastic bottles and glass can be recycled but batteries can be recycled too! Although in most places we can't put them out with our recycling at home. By recycling your batteries you are doing your bit to look after the environment by:

- reducing the amount of waste in landfill sites
- saving energy
- reusing materials found in batteries





With every battery you recycle you're helping the planet!



Did you know, each year we throw away about 600 million batteries?

More than 20,000 tonnes of batteries end up in landfill sites – that's as heavy as 4,000 elephants!


Battery Estimation

Estimate the number of batteries that you have in your home. Think about the number of battery-powered devices your family has (e.g., in toys, torches, remote controls, digital cameras and clocks) and how many batteries might be in each of these. Don't forget about any spare batteries you might have too!

I estimate that there are _____ batteries in our home.

Battery Tally Chart

Most batteries can be recycled but for this project we only want you to collect four different types – AAA, AA, C and D. Have a look inside the battery-powered devices in your home and keep a tally of the number of each type you find. Remember not to remove them if they are still working, we only want to recycle batteries which have run out of power!

Remember to draw a line through your tally every time you reach 5 of a particular type, so you would write 7 like this 

| | |
|-----|--|
| AAA | |
| AA | |
| C | |
| D | |



Draw pictures of the battery-powered devices you can find in your home



Big Battery Hunt Wordsearch!

Can you find the hidden words?

Maybe you could time yourself to see how quickly you can find them all!

| | | | | | | | | | | | | | | | |
|---|---|---|---|---|---|---|---|---|---|---|---|---|---|---|---|
| X | C | G | Q | T | V | C | U | I | Y | S | J | O | K | L | B |
| Y | B | A | T | T | E | R | Y | P | I | O | N | E | E | R | S |
| Z | Z | O | V | S | Z | L | K | P | X | O | J | E | U | S | D |
| T | G | J | T | C | T | F | X | U | U | D | K | C | L | Y | U |
| J | X | V | V | I | W | P | S | F | Y | B | N | A | H | C | L |
| X | Q | R | E | C | Y | C | L | E | N | L | C | F | N | R | K |
| X | R | W | H | U | F | L | D | H | C | I | T | N | K | U | Z |
| C | U | L | L | V | A | B | K | N | M | R | S | N | V | M | A |
| X | B | L | K | T | F | U | I | E | C | O | T | V | J | M | C |
| H | D | L | E | V | C | Z | H | D | K | A | B | A | B | P | X |
| B | A | M | G | N | W | C | T | G | T | B | Y | Y | V | P | D |
| M | Z | H | J | X | U | G | C | P | C | B | C | A | W | O | S |
| D | F | E | L | E | C | T | R | I | C | I | T | Y | L | W | T |
| B | I | G | B | A | T | T | E | R | Y | H | U | N | T | E | E |
| F | G | G | A | J | S | A | F | T | U | O | Z | R | J | R | E |
| Y | V | R | R | R | S | S | T | K | X | L | V | G | N | O | L |



BIG BATTERY HUNT
RECYCLE
STEEL

BATTERY PIONEERS
METAL
ELECTRICITY

CHEMICALS
POWER
ZINC



Design a label for your own battery recycling collection box

True or False?

- Q1. Batteries are made from metals and chemicals.
- Q2. It takes 25 years for batteries to decompose.
- Q3. A battery works when a circuit is broken.
- Q4. Batteries in landfill sites can pollute the soil
- Q5. Steel from recycled batteries can be used to build skyscrapers.

True / False

True / False

True / False

True / False

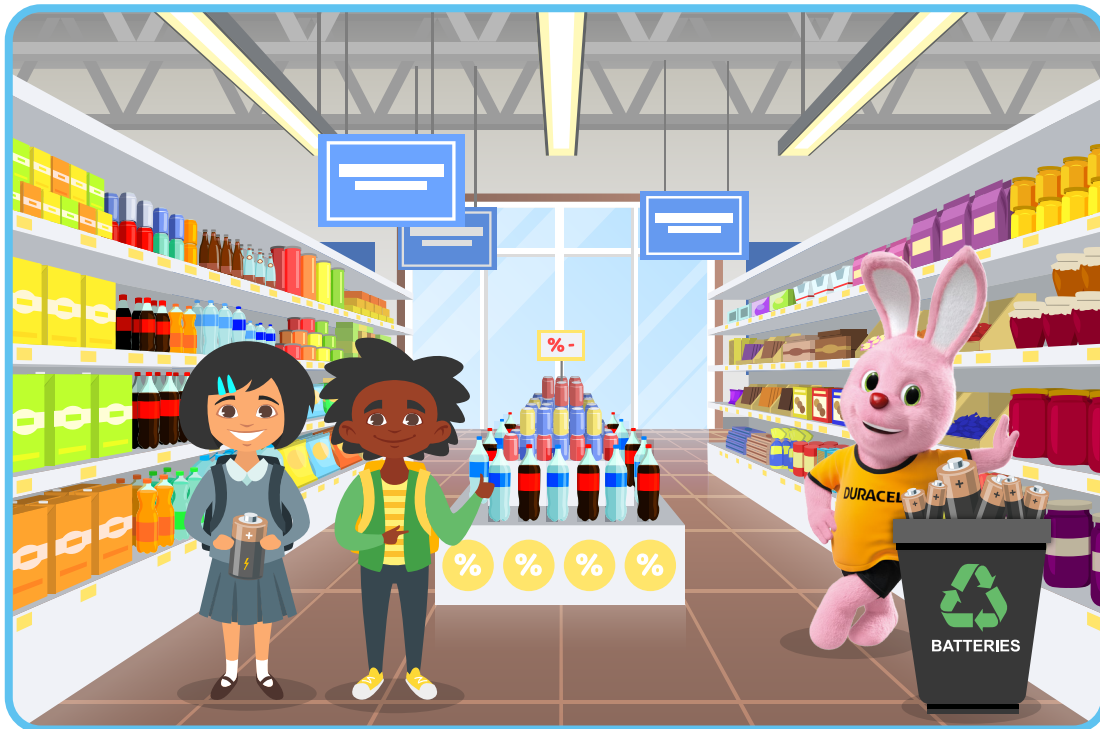
True / False





Spot the Difference

Can you spot the **8 differences** between the two pictures?
Colour in a battery for every difference you spot.





Things to think about

The Big Battery Hunt!

With adult supervision, collect as many used batteries (AAA, AA, C and D) as you can find in your home and take them to a local recycling point. Why not ask neighbours, friends and relatives to do the same!

All brands of batteries count!



Don't forget to count how many batteries you have taken to be recycled so you can tell your teacher. They can upload your class totals to the Big Battery Hunt website.
www.bigbatteryhunt.co.uk

Did you know, the materials from recycled batteries could be used to make new batteries, grass fertilizer and even skyscrapers!



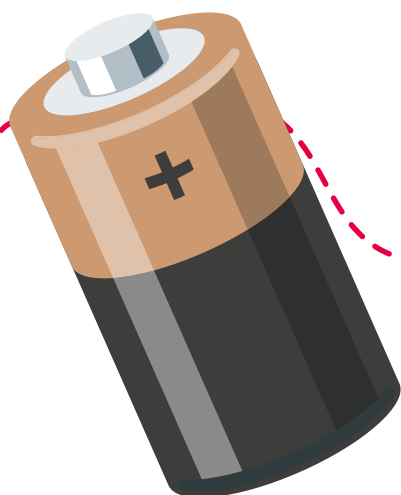
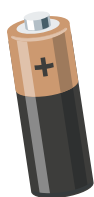


Safety instructions for adults supervising battery collecting

- Discarded batteries present a very small risk of fire and source of ignition. The risk can be greatly reduced by taking the following simple precautions:
 - Keep batteries dry and away from sources of heat.
 - If a battery is damaged or leaking use gloves and put it into a small plastic bag, cardboard or plastic container when taking it to a recycling point.
 - Store the box / batteries away from combustible or flammable materials.
 - Do not put any other items other than batteries in the recycling points.



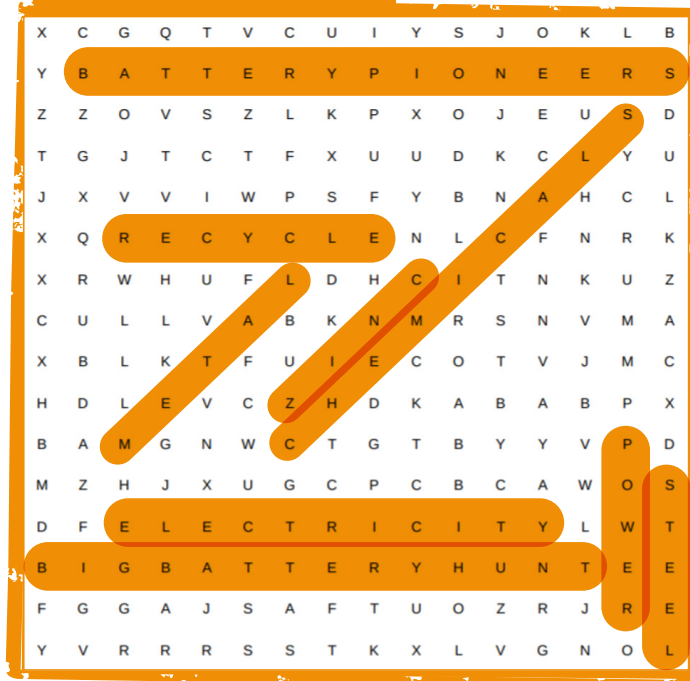
- For this project, we are only collecting AAA, AA, C & D batteries, but please see guidance on alternative batteries:
 - Button cells present a choking / ingestion hazard – keep away from young children.
 - Insulate (tape up) terminals on batteries that can easily short circuit (e.g. 9V batteries)
 - Battery packs from laptops, mobile phones and power tools can only be accepted at certain recycling points and household waste recycling centres. Car batteries can be accepted at household recycling centres, garages, and scrap yards.





Answers

Wordsearch



True or False?

- Q1.

True
- Q2.

False. It takes 100 years!
- Q3.

False. Batteries work when a circuit is complete.
- Q4.

True
- Q5.

True

Spot the difference

